

Date of issue: 03May17

Tour code:

Guaranteed departures

Small group safari maximum:

Travel through:

Safari length:

NBa15

12 travellers
Namibia & Botswana

15 days



2018

NAMIBIA & ZAMBEZI



DEPARTS:

LIVINGSTONE on Sunday at 14:00pm

ENDS:

WINDHOEK on Sunday at +/-08:00

Highlights

- * Victoria Falls – A natural wonder of the world & adventure activities
- * Caprivi – Game drives & boat cruise
- * Etosha NP – game viewing
- * Damaraland– rock paintings
- * Swakopmund – dune boarding & quad biking
- * Namib Desert – walk Sossusvlei dunes



SAFARI GRADE: ACCOMMODATED

A variety filled journey covering the must

see highlights of Namibia including the Zambezi region at an affordable price. Accommodation is comfortable, often in stunning locations. Zambia's yellow fever status has been amended and as such travel to and from Livingstone does not require a certificate. In addition the uni-visa between Zimbabwe and Zambia makes travel between both sides of the Falls easy.

The same itinerary is offered as a camping option, see page 42.

NBa21 Livingstone to Livingstone is the full circular route.

NBa15 Livingstone to Windhoek offers northern Namibia with a Victoria Falls start.

Overnight 14 nights on safari at small lodges (including tented lodges), with en suite facilities.

Meals 14 breakfasts, 11 lunches & 8 dinners included. Of which 7 breakfasts are provided by the lodges. The remaining included meals are provided by Sunway crew and meals will be enjoyed around the campfire at the truck.

Transport for the majority of this safari you travel in custom-built Sunway Safari trucks with 12 forward facing seats. On 5% of tours we may use Mercedes Sprinter minibuses with 12 forward facing seats and air conditioning. There are some long distances to cover and a few early morning starts. For the transfer to the Okavango, we use open-sided 4WD vehicles with local guides.

Limited participation An essential part of your safari is some participation. From carrying your own bag to packing the truck in the morning – it's all part of your adventure. Where the tour leaders provide meals we ask that clients help (on rotation) with the washing up.

Day 1 - 2

LIVINGSTONE [Chalet Bx1--] (B=breakfast, L=lunch, D=dinner)

Tour departure meeting at 14:00pm. Victoria Falls is one of the natural wonders of the world and we take 2 days to explore this area. Adventure activities abound, white water rafting on the mighty Zambezi, or an 111m bungi jump (own expense).

Day 1: Breakfast is not included

Day 1: Lunch is an own expense meal

Day 1: Dinner will be an own expense meal at a local restaurant

Day 2: Breakfast provide by the tour leaders with the help of the group

Day 2: Lunch is an own expense meal

Day 2: Dinner will be an own expense meal at a local restaurant

Includes:

Entrance to see the Victoria Falls

Overnight:

[Victoria Falls Waterfront](#) – Twin share chalet with en-suite facilities. Swimming pool, bar, restaurant, telephone. (Or Maramba Lodge, twin share chalet with en-suite facilities)



Internet café

Distance/time:

N/A

Optional Activities:

White water rafting, sunset cruises, scenic flights & many more



Day 3 – 4

CAPRIVI [chalet BLD]

Crossing out of Zambia into the Caprivi strip, we spend two days travelling west through this game rich area. We'll explore the Kwando River by boat and a game drive into the Mahango Game Reserve.

Day 3: Breakfast provide by the tour leaders with the help of the group

Day 3: Lunch provided by the tour leaders with the help of the group

Day 3: Dinner will be a set menu provided by the lodge

Day 4: Breakfast will be provided by the lodge

Day 4: Lunch provided by the tour leaders with the help of the group

Day 4: Dinner provided by the tour leaders with the help of the group

Includes:

Entrance fees & game drives

Overnight:

[Camp Kwando](#) – twin share permanent tents with en-suite facilities. Swimming pool, bar, restaurant, telephone.



WiFi not available

[Ngepi Camp](#) – twin share tree houses with en-suite facilities. Swimming cage in the river, bar & restaurant.

WiFi free in main building

Distance/time:

Day 3: 300km, ± 4 hours, excluding stops for sightseeing & lunch

Day 4: 200km, ± 3 hours, excluding stops for sightseeing



Day 5 **RUNDU** [chalet BL-]

After a morning enjoying the abundant birdlife that surrounds the camp, our road takes us along the Kavango River. Villages of grass huts and local wooden crafts and carvings a common sight. We stop for the night at our riverside lodge in Rundu and enjoy a spectacular sunset.

Day 5: Breakfast provide by the tour leaders with the help of the group

Day 5: Lunch provided by the tour leaders with the help of the group

Day 5: Dinner will be an own expense meal provided by the lodge

Includes: N/A

Overnight: [Inkwazi Lodge](#) – twin permanent chalets with en-suite facilities, Swimming pool, bar & restaurant.
WiFi not available



Distance/time: 210kms, ± 3 hours, excluding stops for sightseeing & lunch



Day 6, 7 – 8 **ETOSHA NATIONAL PARK** [lodge BLD]

We head deeper into Namibia to the Etosha National Park. The National Park surrounds the Etosha Pan, and is locally named "the great white place of dry water". Waterholes surround the pan and attract game. Etosha is known for great sightings of elephant, antelope and lions. Our lodge lies on the boundary of the park and we spend our mornings and afternoons on game drives.

Day 6: Breakfast will be provided by the lodge

Day 6: Lunch provided by the tour leaders with the help of the group

Day 6: Dinner provided by the tour leaders with the help of the group

Day 7, 8: Breakfast provide by the tour leaders with the help of the group

Day 7, 8: Lunch provided by the tour leaders with the help of the group

Day 7, 8: Dinner provided by the tour leaders with the help of the group

Includes: Entrance fees to Etosha National Park, 2 x full day game drive in Etosha NP

Overnight: [Tarentaal Guest Farm](#) – private working farm outside Etosha National Park. Twin rooms with en-suite facilities. Swimming pool, bar & telephone. (35km/25min from Anderson Gate to Etosha)
WiFi not available



Distance/time: 720kms, ± 9 hours excluding stops for sightseeing & lunch + 2 x full day game drive in Etosha NP




Day 9 **BRANDBERG** [lodge BLD]

Our journey covers some beautiful desert landscapes as we move south towards the Brandberg Mountain. Our lodge is situated in the dry Ugab River which is home to the rare desert elephants. We visit the petrified forest, and take a walk with a local guide to view the famous White Lady rock painting in the area.

Day 9: Breakfast provide by the tour leaders with the help of the group

Day 9: Lunch provided by the tour leaders with the help of the group

Day 9: Dinner provided by the tour leaders with the help of the group

Includes: Entrance to petrified forest and San Rock Art
Overnight: [Brandberg White Lady Lodge](#) – twin share chalets with en-suite facilities, bar, restaurant & swimming pool. 
 WiFi not available
Distance/time: 430km, ± 6 hours, excluding stops for sightseeing



Day 10 – 11 SWAKOPMUND [guest house Bx2 Lx1 -]

We cross flat open plains to the coast where we visit the Cape Cross seal colony. Further south is the coastal town of Swakopmund where we have a day free to explore the town or try sea kayaking or dune boarding (own expense). German colonial influences are strong in the town of Swakopmund as reflected in the restaurant menus and the architecture.

Day 10: Breakfast provided by the tour leaders with the help of the group


Day 10: Lunch provided by the tour leaders with the help of the group

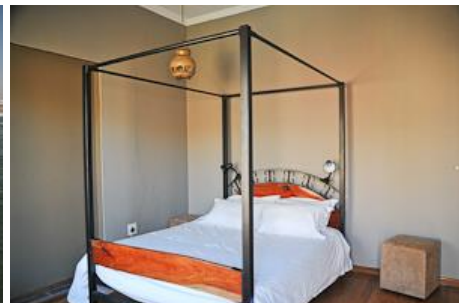
Day 10: Dinner will be an own expense meal at a local restaurant

Day 11: Breakfast will be provided by the guest house

Day 11: Lunch will be an own expense meal

Day 11: Dinner will be an own expense meal at a local restaurant

Includes: Entrance to Cape Cross seal colony
Overnight: [Hotel d'Avignon](#) - twin share rooms with en suite facilities. Telephone & restaurant. 
 WiFi in main building
Distance/time: 250km, ± 3½ hours, excluding stops for sightseeing
Optional Activities: Sand boarding, Skydiving, Ocean canoe safari, Scenic flights & many more



Day 12 – 13 NAMIB DESERT [permanent tent BLD]

The lunar landscapes surround the town of Swakopmund and we visit these as we leave and head into the Namib Desert with its towering red sand dunes. We will walk to Sossusvlei, explore Sesriem Canyon and from the comfort of our lodge outside the national park watch a dramatic sunset over the world's highest sand dunes.

Day 12: Breakfast will be provided by the guest house


Day 12: Lunch provided by the tour leaders with the help of the group

Day 12: Dinner provided by the tour leaders with the help of the group

Day 13: Breakfast provided by the tour leaders with the help of the group

Day 13: Lunch provided by the tour leaders with the help of the group

Day 13: Dinner provided by the tour leaders with the help of the group

Includes: Entrance fees to Sesriem Canyon and Naukluft National Park
Overnight: Namib Desert, [Desert Camp](#) – twin share permanent tents with en suite facilities. 
 Restaurant, swimming pool & bar.
 WiFi not available
Distance/time: 350kms, ± 5 hours excluding stops for sightseeing

Optional Activities: On arrival at Sossusvlei the guide will walk with the group into Sossusvlei (+/- 3.5km). For those clients who do not want to walk, there are 4WD vehicles that can drive you in. The 4WD, is an own expense (+/- N\$50 each way) and is optional.



Day 14 **WINDHOEK** [guest house BL-]


Windhoek is the capital and largest city in Namibia, its charm lies in its harmonious blend of African and European cultures and the friendliness of its people and an interesting mix of modern and German colonial era influenced architecture. We explore the city and enjoy a restaurant meal (own expense).

Day 14: Breakfast provide by the tour leaders with the help of the group

Day 14: Lunch provided by the tour leaders with the help of the group

Day 14: Dinner will be an own expense meal at a local restaurant

Includes: N/A

Overnight: [Klein Windhoek Guest House](#) – twin rooms with en-suite facilities, swimming pool, restaurant & bar. 

WiFi available

Distance/time: 345km, ± 4½ hours, excluding stops for sightseeing & lunch



Day 15 **WINDHOEK – TOUR ENDS** [- B--]

Tour ends after breakfast in the town of Windhoek. Transfers to Windhoek Airport available on request. Please contact the Sunway office at the time of booking to book your transfer.

Day 15: Breakfast will be provided by the guest house

Day 15: NA

Day 15: NA

Includes: N/A

Overnight: N/A

Please note: The distance and travel times quoted above are an estimate only, and subject to local road conditions and photo stops!

Please note: That the accommodation specified above and in the itinerary, is a guide only and is subject to availability. Alternatives will be of a similar standard, and accommodation changes will be made without notice.



Special Interest: The Namib Desert, at 55 million years old, is one of the oldest deserts in the world and covers an area of over 80, 00km². It is home to several unusual species including *Stenocara gracilipes* beetle which survives by obtaining water from morning fog settling on its raised body.

Sustainable Tourism: The sausage tree is the traditional tree cut down to make mokoro (dugouts) used in the Okavango Delta, but sadly these trees are disappearing from the region. Sunway has set up a project to encourage the local community polers to buy fiberglass replica mekoros. Sponsorship for each mokoro is needed . If you would like to contribute, please talk to your guide.

2018 DEPARTURE DATES:

2018 DEPARTURE DATES

NBa15

Departs
LIVINGSTONE
Sunday at
14:00 pm

Ends
WINDHOEK
Sunday at
08:00 am

BTa	07-Jan-18	21-Jan-18	
BTa	11-Feb-18	25-Feb-18	
BTa	18-Mar-18	01-Apr-18	
BTa	25-Mar-18	08-Apr-18	
BTa	08-Apr-18	22-Apr-18	
BTa	06-May-18	20-May-18	German
BTa	20-May-18	03-Jun-18	
BTa	03-Jun-18	17-Jun-18	
BTa	17-Jun-18	01-Jul-18	
BTa	24-Jun-18	08-Jul-18	
BTa	01-Jul-18	15-Jul-18	
BTa	08-Jul-18	22-Jul-18	
BTa	15-Jul-18	29-Jul-18	
BTa	22-Jul-18	05-Aug-18	
BTa	29-Jul-18	12-Aug-18	
BTa	05-Aug-18	19-Aug-18	German
BTa	12-Aug-18	26-Aug-18	
BTa	19-Aug-18	02-Sep-18	
BTa	26-Aug-18	09-Sep-18	
BTa	02-Sep-18	16-Sep-18	German
BTa	09-Sep-18	23-Sep-18	
BTa	16-Sep-18	30-Sep-18	
BTa	23-Sep-18	07-Oct-18	German
BTa	30-Sep-18	14-Oct-18	
BTa	07-Oct-18	21-Oct-18	
BTa	14-Oct-18	28-Oct-18	
BTa	21-Oct-18	04-Nov-18	German
BTa	28-Oct-18	11-Nov-18	
BTa	04-Nov-18	18-Nov-18	
BTa	11-Nov-18	25-Nov-18	
BTa	18-Nov-18	02-Dec-18	
BTa	02-Dec-18	16-Dec-18	German
BTa	16-Dec-18	30-Dec-18	
BTa	30-Dec-18	13-Jan-19	

NBa21 Southern Circle

Departs
LIVINGSTONE
Sunday at
14:00 pm

Ends
LIVINGSTONE
Saturday at
12:00 noon

BTa	07-Jan-18	27-Jan-18	
BTa	11-Feb-18	03-Mar-18	
BTa	18-Mar-18	07-Apr-18	
BTa	25-Mar-18	14-Apr-18	
BTa	08-Apr-18	28-Apr-18	
BTa	06-May-18	26-May-18	German
BTa	20-May-18	09-Jun-18	
BTa	03-Jun-18	23-Jun-18	
BTa	17-Jun-18	07-Jul-18	
BTa	24-Jun-18	14-Jul-18	
BTa	01-Jul-18	21-Jul-18	
BTa	08-Jul-18	28-Jul-18	
BTa	15-Jul-18	04-Aug-18	
BTa	22-Jul-18	11-Aug-18	
BTa	29-Jul-18	18-Aug-18	
BTa	05-Aug-18	25-Aug-18	German
BTa	12-Aug-18	01-Sep-18	
BTa	19-Aug-18	08-Sep-18	
BTa	26-Aug-18	15-Sep-18	
BTa	02-Sep-18	22-Sep-18	German
BTa	09-Sep-18	29-Sep-18	
BTa	16-Sep-18	06-Oct-18	
BTa	23-Sep-18	13-Oct-18	German
BTa	30-Sep-18	20-Oct-18	
BTa	07-Oct-18	27-Oct-18	
BTa	14-Oct-18	03-Nov-18	
BTa	21-Oct-18	10-Nov-18	German
BTa	28-Oct-18	17-Nov-18	
BTa	04-Nov-18	24-Nov-18	
BTa	11-Nov-18	01-Dec-18	
BTa	18-Nov-18	08-Dec-18	
BTa	02-Dec-18	22-Dec-18	German
BTa	16-Dec-18	05-Jan-19	
BTa	30-Dec-18	19-Jan-19	



* **Bold dates** are guaranteed departures, all other dates guaranteed from 4 clients.

* **German:** These tours have a German speaking translator/tour leader

* **BTa:** These tours can be linked after the Botswana Wildparks 14day accommodated safari.

DETAILED TOUR INFORMATION:

In a nutshell

- A true exploration of Namibia, Botswana - see it all!
- All inclusive trip with cultural experience, adventure and wildlife.
- Victoria Falls, Caprivi, Etosha, Damaraland, Namib Desert, Kalahari, Okavango Delta & Chobe.

Why travel with Sunway Safaris

We understand that there are several options available to you when choosing your African safari. We also know that you want to make the most informed decision about your safari, what you get, what's included and what you see and experience. So these are just a few of the Sunway qualities and facts:

- **Small groups** – by travelling with a maximum of 12 people, you are able to witness Africa and have first-hand contact with this amazing continent and its people without being a negative influence. This has been a key factor in our continued success. Our trips appeal to a wide demographic of traveller. Our clients range in age from 25 to 65+ with the average being 45. The range of travellers gives a variety of perspectives which adds to the experience of each safari.
- **2 Sunway tour guides** – group leaders are the key to any safari. On a Sunway safari you will travel with 2 qualified and registered field guides (Field Guides Association of SA). Two guides as crew, not a guide and a driver, means interesting trips with maximum knowledge and information. Our guides have a passion for Africa, her people and her wildlife, and they love nothing more than sharing their knowledge with you.
- **Guaranteed departures** – departure dates on each itinerary shown as bold are guaranteed departure dates. All other departures operate with a minimum of 4 clients.
- **All inclusive price** – when we travel ourselves, we always feel that if we're in a country we should find and see the best it has to offer. So when planning the Sunway routes we ensure that each trip provides the best inclusions and experiences. For example, if you go to Botswana – you have to visit the national parks in an open 4WD – it is the essence of the Botswana wilderness. If you tour Zambia, then you must visit South Luangwa NP and do a game walk with a local scout. When booking on a Sunway Safari there are no hidden costs. All of the entrance fees are included, and a wide range of activities, and most meals. We have included many highlights in our tours, so that you will see and experience the highlights without having to pay extra when you get there. So when you decide on which safari company to book with, look carefully at what you're actually getting. You may only visit a place once, make sure you get the most out of it.
- **Safety** – our fleet of vehicles are custom built to ensure comfortable and safe touring. Each is constructed, by an authorised passenger vehicle builder, to the latest safety requirements, with a safety shell, and every seat has a lap belt. This gives you peace of mind when travelling with Sunway Safaris on the often demanding African roads.
- **Responsible travel** - Our commitment to sustainable & responsible tourism is reflected in our low impact travel style where all we take is photographs and all we leave is our footprints. Being an African company we have the grassroots contacts to make a real difference in the lives of the people whose lands we visit. On each itinerary in the brochure you'll find this symbol which highlights just one of the sustainable travel initiatives that we support 
- **Solo Travellers** – going it alone won't make your holiday more expensive; our reservations staff will match you up with another same-gender traveller to keep your holiday affordable. If however you request a single room or tent these are available, with a price supplement
- **Experience** - we have more than 20 years' experience planning tours throughout Southern Africa. As such, our itineraries and routes have been perfected over many years ensuring that your tour will run smoothly. We visit the highlights of Southern Africa, but ensure that you do not follow the well-trodden tourist track. All of us at Sunway Safaris have extensive travel experience in Africa, and throughout the world. Being adventure travellers ourselves, we know how to plan trips that give you a broad experience of the countries that you will visit.
- **Based in Africa** - probably the most important part of a Sunway safari is that we are an African company with offices in South Africa and Botswana. We live in Africa, we travel in Africa and it is our passion for this amazing continent that makes Sunway your best travel option.

SOS trees project – Okavango Botswana

- For hundreds of years, the local communities in and around Botswana's Okavango Delta have used the wood of the sausage tree to craft their traditional mokoro (dugout canoes). The knowledge and skill have been passed

SUNWAY SAFARIS PO Box 2807, Sunninghill, 2157, RSA Email: sunway@icon.co.za T: +27(11) 465 4905

down from generation to generation and, up until recently, has been a sustainable practice. With increasing numbers of people visiting the Delta each year, more mokoro are needed and as a direct result, more and more sausage trees are being felled and the sausage tree is sadly disappearing from the region. A traditional wooden mokoro will have to be replaced every five years, thereby placing increased pressure on the dwindling sausage tree supply.

Sunway Safaris has established a project to encourage polers in the local communities to buy replica fiberglass mokoro's, which have a lifespan of approximately ten years, are more stable and are produced without any negative affect to the environment. As such, sponsorship for each fiberglass mokoro is needed, and a portion of the tour cost will be donated to the project, but we also will offer our clients the opportunity to contribute to this worthwhile cause. Please feel free to contact the Sunway Safaris office for more information on the SOS trees project or if you would like to make any contributions towards this project. It is something that is close to all of our hearts and we hope that it will be successful.

Local Payment

- A local payment is required on this safari and this will be collected by your tour leader on departure. The local payment forms part of your overall tour cost, and must be taken into consideration when booking your safari. It will be used by your tour leaders to pay for some of the operational costs incurred on safari.

Sunway prepays by bank transfer, as many of the tour costs as possible. However, in many cases, a cash payment is the only option: certain of the destinations that we visit, only accept cash. For example entry fees to most national parks, some of the campsites and also local food markets (and even some shops) are only payable in cash. In addition, each Sunway vehicle has a garage card but these are only accepted in South Africa and parts of Namibia, therefore in all other countries, fuel must be paid for in cash. Due to the remoteness of some departure points, having a local payment system enables us to manage tour funds effectively. The efficiency of this system helps keep the overall tour prices down.

For these reasons, it is necessary for Sunway to charge a local payment. It also ensures that a portion of the tour costs goes directly into the country you are visiting, thereby benefiting local communities and contributing to the conservation of the areas we visit. This is all part of Sunway Safaris' ongoing effort to operate sustainable safaris that make a real difference.

Recommended reading

Before you travel you might want to read any of the following books. While not specific to the Sunway tour you will join, they do provide some background understanding of the countries you will be visiting.

- Sands of Silence by Peter H Capstick
- Skeleton Coast by John H Marsh (Wreck of the Dunedin Star and its survivors)
- The Skeleton Coast by Benedict Allen (A journey through the Namib Desert)
- The Smell of Apples by Mark Behr (Story of boy in Cape Town by then army on Caprivi)
- Etosha by Daryl and Sharna Balfour (A coffee table book of photography)
- Long Walk to Freedom by Nelson Mandela (Autobiography - Nelson Mandela is one of the great moral and political leaders of our time.)
- #1 ladies Detective Agency by Alexander McCall Smith (Fictional story of life in Botswana)
- Trees of the Okavango by Veronica Roodt (A reference book with traditional uses and myths)
- Okavango: Jewel of the Kalahari by Karen Ross (A comprehensive description of the Delta ecology)
- Don't run whatever You Do by Peter Allison (A guide's perspective of Botswana lodge life)
- Okavango: Africa's Last Eden by Frans Lanting (A coffee table book of photography)
- Newman's Birds of Southern Africa by Kenneth Newman
- Sasol Birds of Southern Africa by Ian Sinclair, Phil Hockey, and W.R. Tarboton
- The Safari Companion: A Guide to Watching African Mammals Including Hoofed Mammals, Carnivores, and Primates by Richard D. Estes and Daniel Otte
- Field Guide to Trees of Southern Africa (Field Guides) by Braam Van Wyk, Keith Coates Palgrav, and Piet Van Wyk

Shopping

- Craft shopping for carvings, batiks, paintings and clothing are best in Livingstone, Zambia which has a wide variety of curios. Botswana has beautiful grass weavings. Namibia also has unusual and interesting curios and crafts. If you see something you like, it is best to buy it because it is unlikely that you will see something similar further along. Crafts from change from region to region.

Food

- We pride ourselves on giving very good healthy meals to our clients and will provide three meals per day, except where shown in itinerary, when we try out local restaurants.
- The tour leaders do the shopping and meal planning for each group. He/she will always try to obtain fresh produce wherever possible. A rough idea of what these will consist of is: Breakfast - cereals or coffee and toast or the occasional fried breakfast, Lunch - cheese, cold meats, salads on bread or rolls, Dinner - braais (local

barbecue), potjies (stews), stir fries etc. We use regular plates, cups and cutlery. All cooking and eating utensils will also be provided.

- We do cater for special dietary requirements (e.g. vegetarian or allergies.)
- We will supply fruit squash served with breakfast and tea or coffee served with breakfast and dinner. All other beverages will be for your own expense. We will not supply bottled drinking water although it is available at many shops on tour.

Difficulty

- Anyone who is generally active and in good health should enjoy this trip. The outdoor enthusiast enjoys simple campsites and basic wild camps, you will get dusty on occasion; but this is Africa!
- Full itinerary with a couple of long driving days, but also plenty of outdoor activity with some relaxing time. This is a long distance trans Africa safari - there is a lot of distance to be covered and so there will be some long travelling days. Due to local conditions, border crossings, road detours and weather, the trip may alter route / schedule - please remember that this continent has its own time scale and things work differently here. Keep an open mind and a sense of humour - it's all part of the adventure!
- Everyone is asked to help out with the running of camp on tour. In other words if everyone spends a little time setting up camp, preparing meals and cleaning up then the tour will run smoothly and everyone will have a good time. Participation is the name of the game.

Things you should know

- Includes park entrances, game drives and the Okavango Delta excursion.
- Your client will need a valid passport and visas for entry into Namibia, Botswana and Zambia.
- Luggage, please pack to a limit of 12kgs in a soft sports tog bag. Bring a daypack for walks. You will need to bring your own towel.
- We recommend that you bring Euro, US\$ or South African Rand for personal expenses on this trip but please note that in Namibia Euro and US\$ will need to be changed into Namibian \$ or South African Rand as shops, restaurants and market vendors only accept N\$ and ZAR. In Botswana please note that foreign currency will need to be changed into Botswana Pula as shops, restaurants and market vendors only accept BWP. Zambia requires that all services are paid in local currency, however major credit cards (Mastercard / Visa) can also be used for optional activities in Livingstone and elsewhere on tour. See the Sunway tour dossier for approximate costs of drinks and meals etc.

Common questions about this trip

1. **Can I buy camera memory cards?** Memory cards and other photographic accessories will be available several times on tour. A camera with a zoom lens from wide angle to telephoto, 35-300mm, is advisable to capture both scenic and wildlife shots. Each vehicle is fitted with a 12/24V cigarette lighter – this should not be relied on for charging camera batteries and we recommend you bring a 2nd battery. Remember you can also charge your camera on those nights we use accommodation (SA 220V)
2. **Is it safe?** South Africa, Namibia, Botswana and Zambia are relatively safe and your guide knows the countries intimately and will endeavour to show you the best parts while looking after you. In the wild areas your guide will brief you on the necessary precautions, follow this advice and you will be fine. Be aware of your personal belongings and you will have a great trip! Every precaution is taken to ensure a happy holiday.
3. **Do I need malaria tablets?** Yes, the trip passes through malaria areas and prophylactics are recommended.
4. **What do I need to bring?** All details are covered in our general tour briefing (available from www.sunway-safaris.com on home page) but the basics are: - a warm sleeping bag, comfortable clothes for warm days and cool evenings, walking shoes, a raincoat, hat and sunglasses, swimsuit, a small pair of binoculars also comes in very handy and most importantly - a sense of adventure!

